

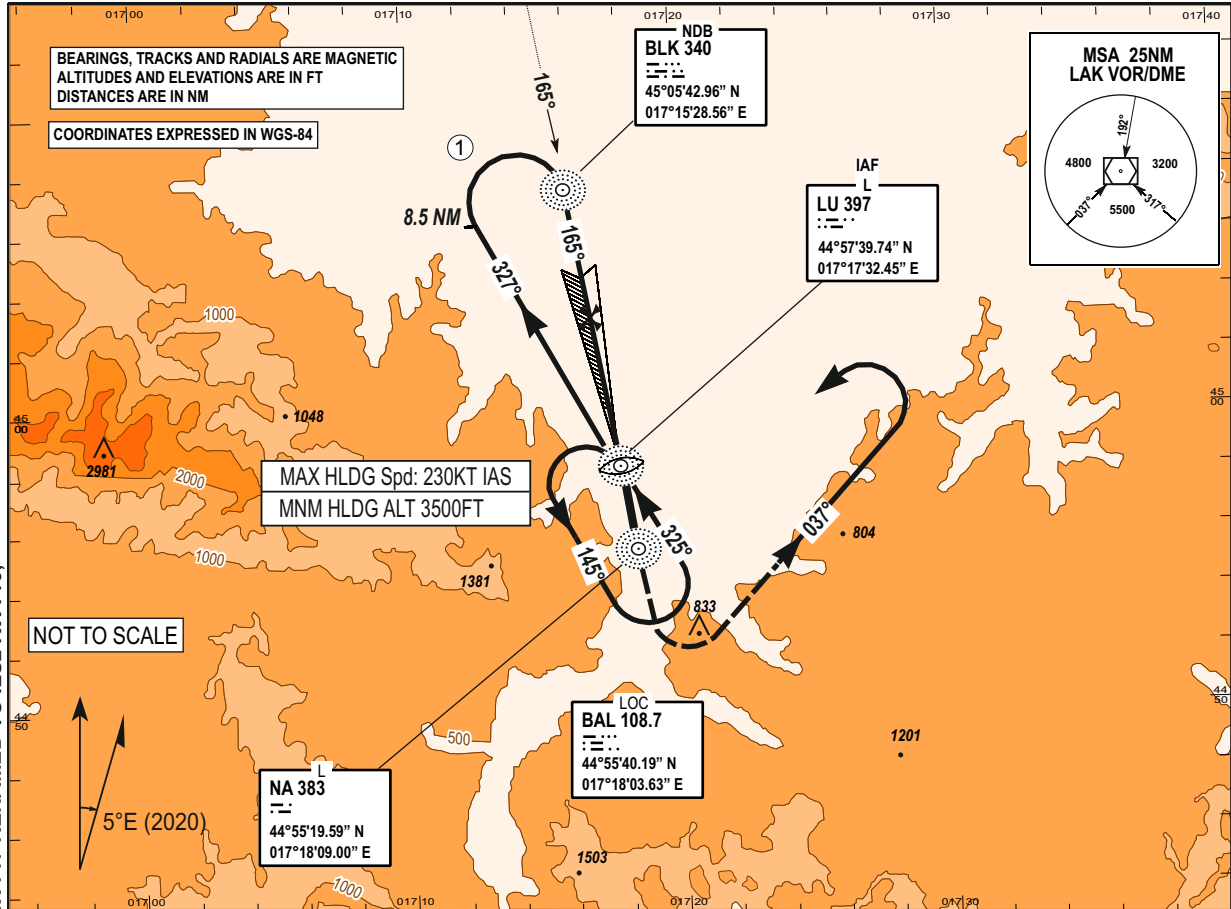
INSTRUMENT APPROACH CHART - ICAO

AD ELEV 401 FT
HEIGHTS RELATED TO THR RWY16 ELEV 376 FT

TRANSITION ALTITUDE 10 000 FT
VAR 5°E (2020)

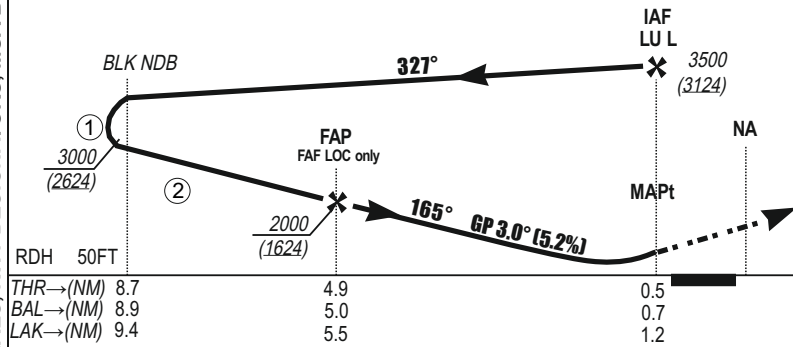
TWR/APP 133.075
SPARE 124.175

BANJA LUKA (LQBK) ILSz RWY 16



DME BAL	9.0	8.0	7.0	6.0	5.0	4.0	3.0	2.0	1.0
DME LAK	9.5	8.5	7.5	6.5	5.5	4.5	3.5	2.5	1.5
ALT (HGHT)	3240 (2864)	2920 (2544)	2600 (2224)	2290 (1914)	1970 (1594)	1650 (1274)	1330 (954)	1010 (634)	690 (314)
5.2% APCH									

KT	80	120	150	180	210
MIN : SEC	3:18	2:12	1:46	1:28	1:15
Rate of descent 3° FT/MIN	420	640	800	950	1110



MISSED APPROACH:
Climb on RWY TR to 1500 FT.
Then turn **LEFT** on to track 037° climbing to 4500 FT.
Then turn **LEFT** join the holding.

OCA / H published in feet.

CAT	ILS CAT I	LOC only	CIRCLING
A	620 / 244	720 / 344	870 / 494
B	620 / 244	720 / 344	1000 / 624
C	620 / 244	720 / 344	1210 / 834
D	620 / 244	720 / 344	1260 / 884

- WARNINGS:
- ① Remain within 10NM
 - ② Do not descend below 3000 until LOC interception.

CHG: MAG VAR, MAG BEARINGS & RADIALS, RWY DESIGNATORS, MSA BEARINGS, ILSz RWY17 RENAMED TO ILSz RWY16;

THIS PAGE INTENTIONALLY LEFT BLANK